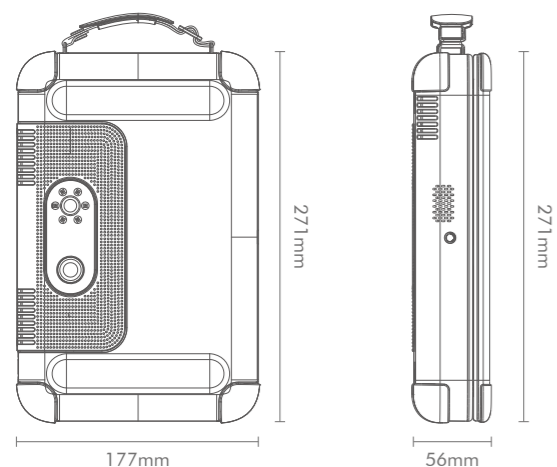


Size



Application



Office temporary inspection



Conference room inspection



Assessment of classified locations

Customer Group

Confidentiality bureau

Public security organs

Government-affiliated institutions

State-owned enterprises

Government/Military

Scientific research institutions

Specifications

Weight (Host)	≤ 1.65 kg
Screen Size	10.1-inch
Screen Resolution	1920 * 1200
Storage Capacity	256 GB
Stored Video Resolution	Infrared thermal imaging: 384 * 288 Endoscope detection: 1920 * 1080
USB Data Interfaces	USB-A * 1, USB-C * 1
Charging Duration	≤ 2 hours
Operating Duration	≥ 2.5 hours, supports use while charging

WiFi Detection

Supports 802.11 a/b/g/n/ac/ax WiFi signal analysis
 Displays WiFi topology list, showing hotspot and terminal connections
 Automatically identifies and marks suspicious devices engaged in video activities via WiFi

Bluetooth Detection

Detects Bluetooth devices such as smartphones/tablets, smartwatches/bracelets, and computer peripherals, Apple Devices(iPhones, AirPods, Watches, Airtags etc)
 Supports Bluetooth 1.0/2.0/3.0/4.0/5.2 signal analysis
 Identifies device names, MAC addresses, signal strength, and other detailed terminal information

Mobile Signal Detection

Detects mobile communication signals from the four major carriers: 2G/3G/4G/5G
 Supports detection of standby, calling, voice call, video call, and data consumption status signals

Infrared Thermal Imaging Detection

Temperature range -10°C to +120°C, with customizable alarm threshold settings
 Supports real-time temperature measurement of dynamic points, lines, and surfaces

Hidden Camera Detection

Detection Range 0.5 meters to 5 meters

Endoscope Detection

Physical Pixel ≥ 1 megapixel
 Illumination Method Linear adjustment of light brightness

Audio-Video Restoration

Supports the detection and restoration of analog FM audio and 5.8G video signals

Non-linear Junction Linkage

Supports linked detection with non-linear junction detectors

Remark:

Default Detecting mobile communication signals: 2G/3G/4G/5G (1710~1785MHz, 880~915MHz,824~849MHz, 703~748MHz, 2300~2400MHz, 2010~2025MHz, 1920~1980MHz, 1880~1920MHz, 4800~5000MHz, 3300~3800MHz, 2496~2690MHz)

MultiX DT-8000

Portable Integrated TSCM Equipment



WiFi Detection | Bluetooth Detection | Mobile Signal Detection | Audio-Video Restoration

Hidden Camera Detection | Infrared Thermal Imaging Detection | Endoscope Detection | Non-linear Junction Linkage Detection

Shenzhen iSecus Electronic Co., Ltd www.isecus.com sales@isecus.com +86-185-7662-7199

Portable Integrated TSCM Equipment

Multix DT-8000

Introduction

Portable Integrated TSCM Equipment, innovatively integrates eight functions, including six routine detections: WiFi, Bluetooth, mobile signal detection, hidden camera detection, infrared thermal imaging detection, and endoscope detection, as well as two additional functions of audio-video restoration and non-linear junction linkage detection. The equipment allows for testing data comparisons based on time and location, outputs differences, and prompts operators to quickly conduct corresponding risk assessments. With an integrated design and skinning technology, it is portable and user-friendly, making it suitable for use in sensitive areas of party, government, military, and enterprise institutions.

Eight-in-one intelligent detection, combining the experience of professionals

Easy search for target objects, approaching-style positioning assistance

Quick decision-making, visualization of abnormal data to assist in judgment

Functions



WiFi Detection



Bluetooth Detection



Mobile Signal Detection



Audio-Video Restoration



Hidden Camera Detection



Infrared Thermal Imaging Detection



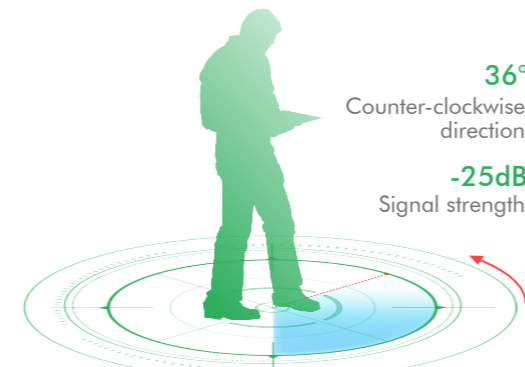
Endoscope Detection



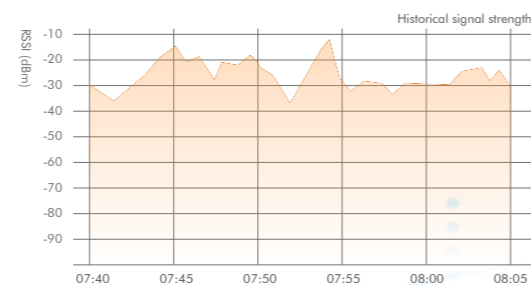
Non-linear Junction Linkage Detection

Approaching-style Positioning Assistance

Capturing target signals in all directions, providing approaching-style directional indication and signal strength display, facilitating wireless signal positioning; Progressive sound alarm, guiding users to quickly approach the target object.

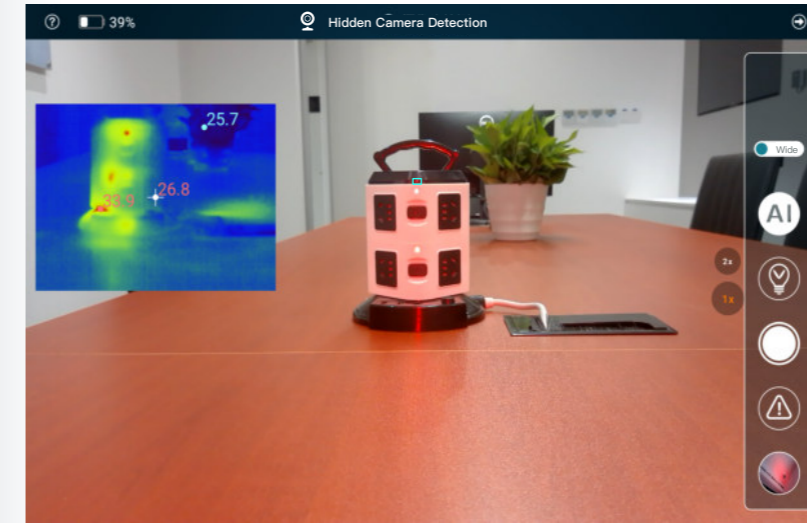


Electronic compass provides directional assistance



Dual-mode Synchronous Detection

Synchronized detection of hidden camera and infrared thermal imaging, supporting image overlay and improving detection efficiency.



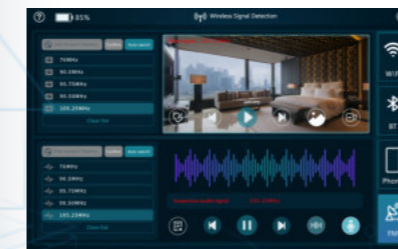
Software Features



WiFi signal topology diagram



Non-linear junction linkage detection



Audio-video restoration



One-click export of reports

Highlights



Innovatively integrates eight detection technologies to comprehensively meet routine safety inspection needs.



Built-in antenna design, coupled with a 10.1-inch high-definition touchscreen, ensures both visual appeal and user comfort.



The UI interface is simplified and intuitive; major detection functions are easily accessible with one click, supporting multiple detection modes and direct access to topology maps, significantly enhancing user experience.



Built-in directional and omni-directional antennas, along with electronic compass and historical signal strength display, assist in accurately locating suspicious devices.



Leveraging professional expertise, the equipment can automatically identify and track detected objects, issuing alerts for anomalies and reducing human error.



The testing process is streamlined, covering all data from detection phases, including non-linear junction detection, generating a unified format report; supports various data archival types for easy backtracking.