

iSecus

UTi 320E Industrial Infrared Thermal Imager

Temp Range : - 40°C~400°C | 320*240 pixels



temperature range

-40°C ~ 400°C

IP54 dustproof and waterproof

2m drop

PC software analysis

+PP projection software

Mobile APP

Support Wi-Fi photo download

3.5" IPS

(640*480)

Color bar tool

Isotherm function temperature
width setting

Support visible light fusion

200W visible light pixels

Long battery life

Type-C direct charge/
removable lithium battery

Removable and rechargeable lithium battery



Type-C

Charging instructions

The battery can be removed separately

Charge separately

5200mAh

Rechargeable lithium battery

Type-C

USB data cable

3.7v



Type-C interface charging



Protection against misplugging



The battery is charged separately



Type-C interface

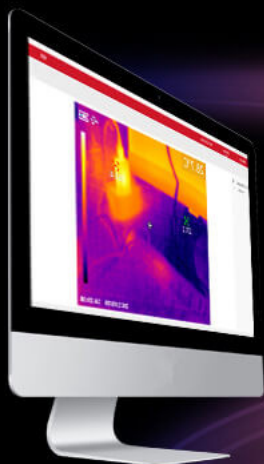


16G memory card



Support power bank charging

PC computer software



◆ Picture Viewer

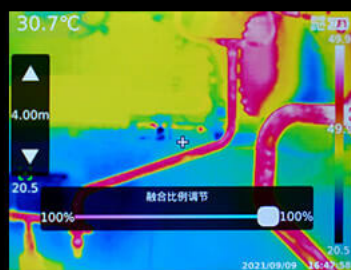
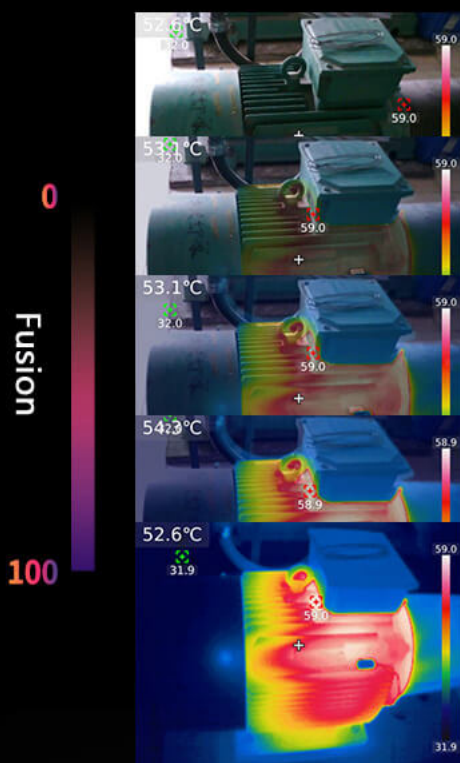
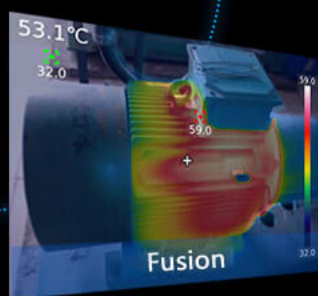
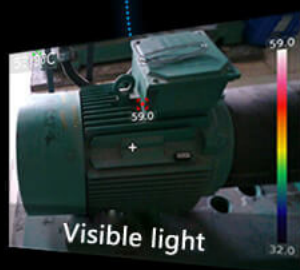
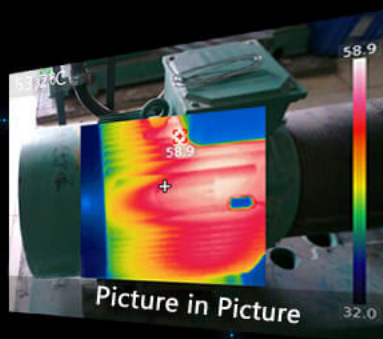
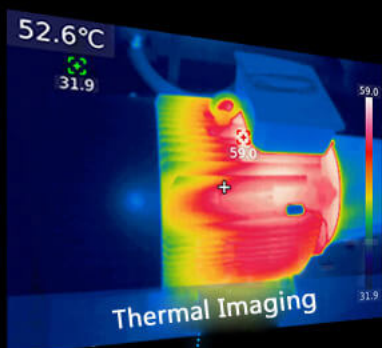
◆ Real-time screencast

Real-time projection of the real-time image screen on the thermal imager to the PC software



◆ Picture analysis

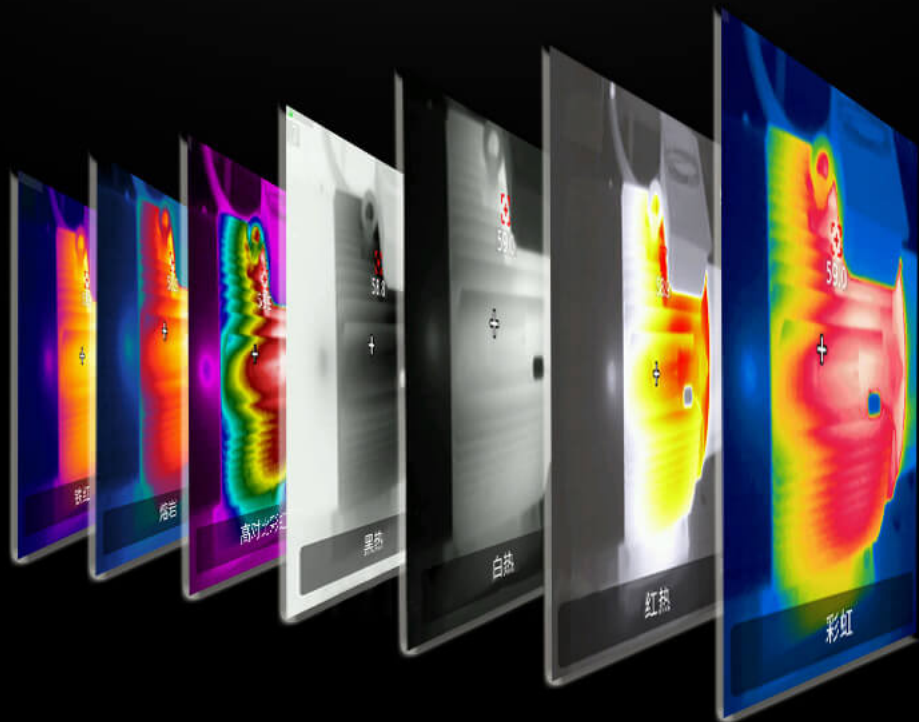
Multi-image mode



Fusion degree and fusion distance adjustment

Optional 0.15m~3.95m distance adjustment
and 0%~100% fusion degree adjustment

Seven palette modes



Real-time temperature mode selection



Center point:
fixed-point temperature measurement

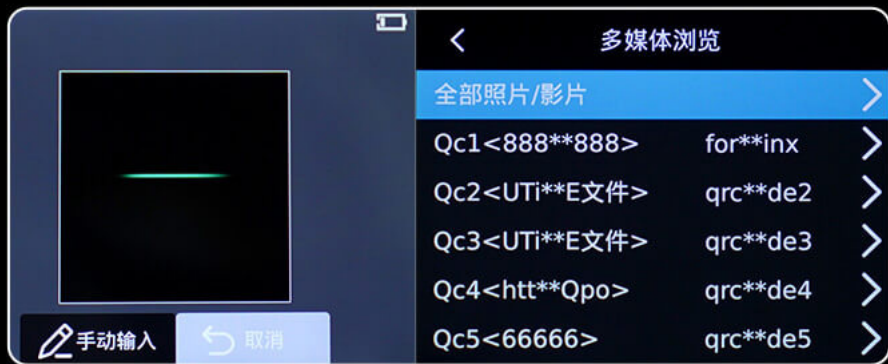
High and low temperature
automatic tracking



Temperature analysis: Under the real-time screen, point, area, line and circle are analyzed, and the temperature is displayed in real time

Camera/storage function

- ◆ Optional instant photo and delayed photo

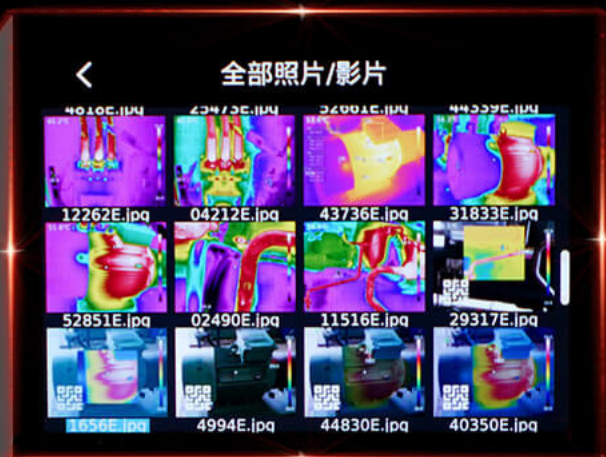


Custom storage file library

Picture-in-picture mode



Picture touredit



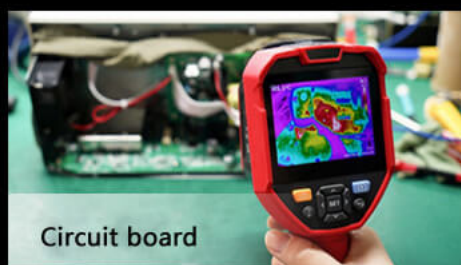
Enter the picture tour interface, you can perform object analysis on the picture, edit the image mode, color palette display, color bar, etc.

High and low temperature alarm

High and low temperature limit alarm can be set



Application scenario



Details can be seen everywhere



