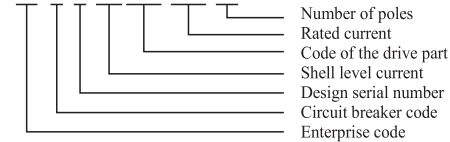


### Function Introduction

WiFi "smart" circuit breaker is suitable for line with AC 50Hz, rated voltage 230V/400V, rated current to 100A, and is protecting against overload, short circuit and isolation; At the same time, as a smart reclosing circuit breaker, it also has the function of global remote control on/ timing on / breaker circuit of the mobile phone, delay on / cycle on / witch state feedback to the mobile phone for synchronization delay of 5 seconds after synchronization/tripping.

Purpose: Remote intelligent control of homes, student dormitories, enterprises, municipal projects, street lamps, farms, rental houses, pumps, floor heating, water heaters, etc.

ZM B 9-125ARD 100A/2P



### Technical parameter

Standard-compliant: GB10963.1; IEC60898-1

Rated voltage: AC 230V 1P 2P

AC 400V 3P 4P

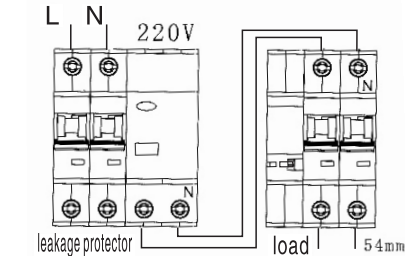
Frequency: 50Hz

Number of poles:	1P 2P 3P 4P
Pollution levels:	Level 2
Protection level:	IP20
Installation category:	II III
Specified use temperature	-25℃~+65℃
Rated current in shell leve	125A
Rated current	32A, 40A, 63A, 80A, 100A, 125A
Instantaneous tripping form:	C
Rated short circuit breaking capacity	6kA
Rated impulse withstand voltage	6kV
Mechanical life:	More than 10,000 times
Electrical life:	More than 6,000 times.

### Troubleshooting

1. Check if the little red toggle switch is working. If it is in the matching state, please turn it back to the working state and turn off the main power supply and then power on again. 2. Check if the 220 volts at the incoming line end is normal. 3. For 3P products, please check if the zero line is connected to the power supply zero line. 4. For 4P products, check if the terminals on the left and right sides have 220 volts.

### Wiring Schematic Diagram



This product is a remote control switch, please use it with caution, and the company does not bear legal responsibility for accidents caused by remote operation. When the line and equipment are maintained, the upper main power supply must be cut off to prevent others from controlling your mobile phone.

Note: When using 1P and 3P products, the zero line that comes with the product needs to be connected to the zero line in the power distribution system.

### ZMB9-125 ARD WIFI smart circuit breaker Operation Manual

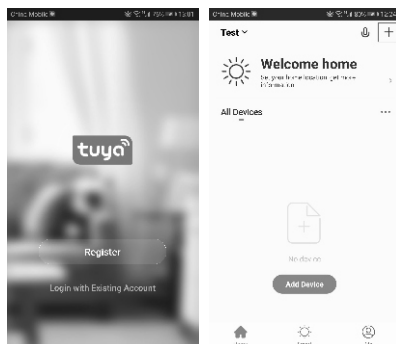


### Network accesses setting

- Open the "Tuya Smart" App and log in.

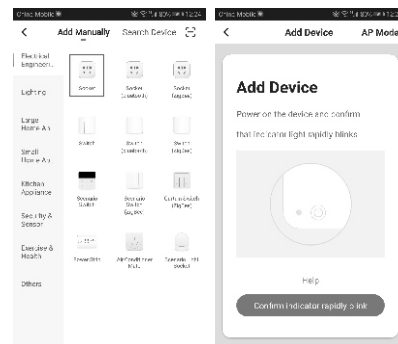
On the home page, select the family in the upper left corner and click the "+" in the upper right corner to enter the Add Device page.

selects the family    add page device

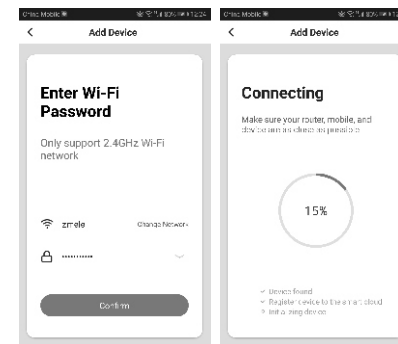


Select the Family Add Device page and click on "All Devices", find the "Sockets" option and select.

Turn the product on, wait 2 seconds, then turn the switch from the working position to the matching position. After the blue indicator light flashes quickly, turn the switch back to the working position, and then click the "Confirm indicator is flashing" button.



- Enter the selected wi-fi corresponding password
- Only 2.4G wireless network is supported, and 5G wireless network is not supported. The Chinese characters are not supported in the Wi-Fi name and password, otherwise the addition will fail.
- Wait for the connection after clicking "OK"



- The device was successfully added after the connection was successful.
- The switch button and the central power button can control the device's turning on / off.
- The timing button controls the device to turn on or off at a specified time.
- The countdown button controls the device to turn on or off after a specified time.

