

FINGERPRINT LOCK



Fingerprint



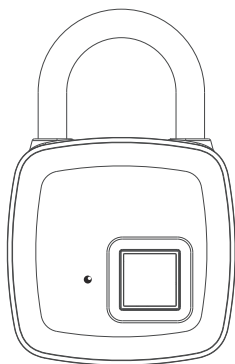
Stand-by Time
2 Years



Waterproof IP54

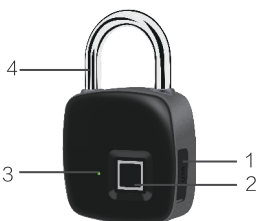


Security



I .USB Interface:

The product is charged by USB. Please fully charge the product at the first time.



Components:

- 1.USB Port
- 2.Fingerprint Sensor
- 3.LED Light
- 4.Shackle

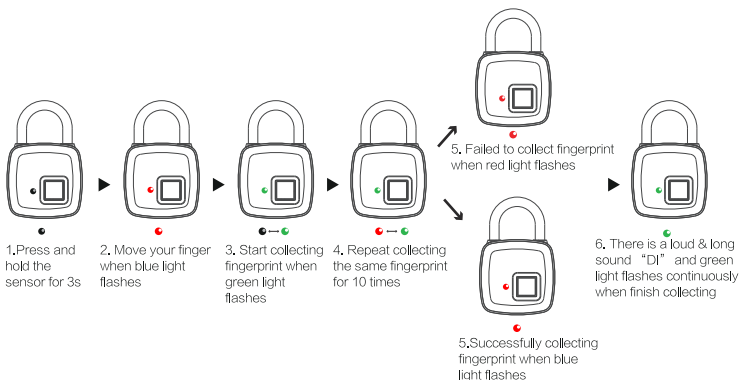
II .Indicator

The indicator has 3 colors. Different color represents different status of the Fingerprint Padlock.

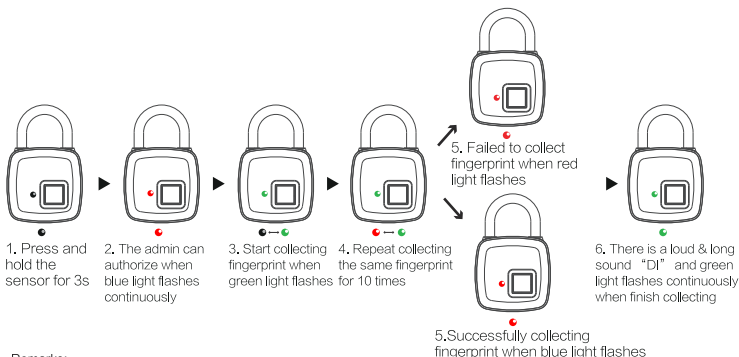
Please check the details as below chart:

| Indicator Light | Fingerprint Padlock Status |
|-----------------------------|---------------------------------|
| Red light flashes | Low power |
| Red light on | Recharging |
| Light off | Completely Charged |
| Green light flashes | Collecting fingerprints |
| Green light on | Finish collecting fingerprints |
| Blue light on | Admin fingerprint authorization |
| Green light flashes quickly | Unlock successfully |
| Red light on | Delete fingerprint |
| Red light flashes | Fail to collect fingerprint |

III .How to Collect The First Administrator' s Fingerprint



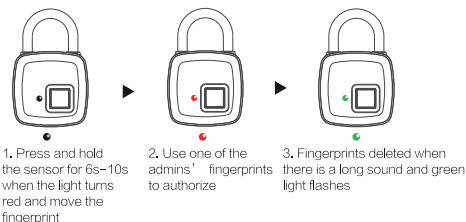
IV .How to Collecting The 2nd to 10th Fingerprints



Remarks:

- 1. The first and second fingerprints are the admins by default
- 2. One of the admins fingerprint will be need to authorize when adding fingerprints

V .How to Delete Fingerprints



Remarks:

Only the administrator can delete the fingerprint and delete all the fingerprints at one time

VII .Low voltage

When the voltage $\leq 3.5V$, the red light flashes for 15s. If in the statues of low voltage/ low battery, it will alarm per minute.

VI .Specifications

Support 360 degree angel fingerprint recognize
Resolution: 508DPI
ESD: +/-12kV air, +/-8kV contact
FRR: <1%
FAR: <0.002%
Recognize time: <300mS
Battery: 3.7V 300mAh
Charger: 5V 1A

指纹锁



指纹识别



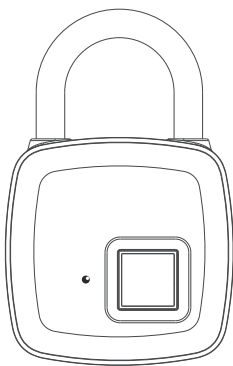
待机时间2年



防水等级 IP54



智能安全



一、USB接口:

设备通过数据线连接USB进行充电。
(首次使用请先给设备充满电。)



部件识别:

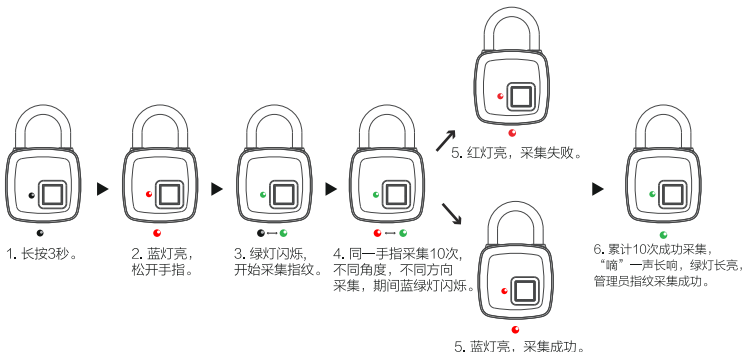
- 1. USB接口
- 2. 指纹采集器
- 3. LED指示灯
- 4. 锁梁

二、指示灯

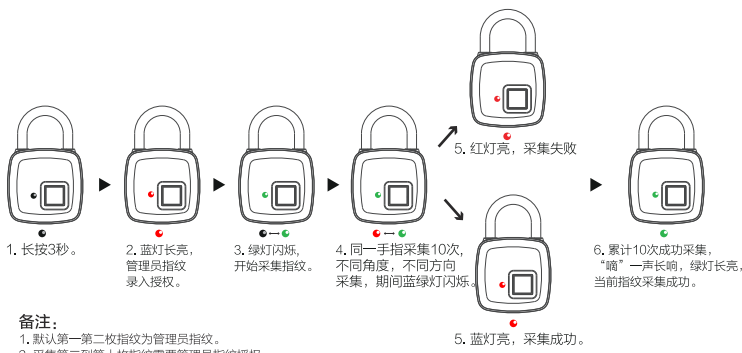
采用3色指示灯，指示灯不同颜色，不同状态代表设备不同状态。详情见下表:

| 指示灯状态 | 状态 |
|--------|----------|
| 红灯闪烁 | 电量低 |
| 红灯长亮 | 充电中 |
| 灯灭 | 充满电 |
| 绿灯闪烁 | 指纹采集模式 |
| 绿灯长亮 | 指纹采集成功 |
| 蓝灯长亮 | 管理员指纹授权 |
| 绿灯快速闪烁 | 解锁成功 |
| 红灯长亮 | 清除所有指纹模式 |
| 红灯闪烁 | 指纹采集失败 |

三、首次 (管理员) 指纹录入说明



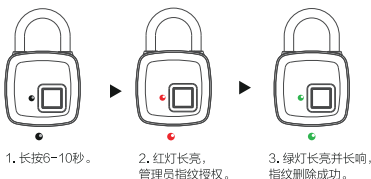
四、第二个到第十个指纹录入说明



备注:

- 1. 默认第一枚指纹为管理员指纹。
- 2. 采集第二到第十枚指纹需要管理员指纹授权。

五、删除指纹说明



备注:

只有管理员才能删除指纹，并且是一次性删除全部指纹。

六、规格参数

支持360° 任意方向按压式指纹识别;
分辨率508DPI;
ESD: +/-12kV空气, +/-8kV接触;
FRR: <1%;
FAR: <0.002%;
识别时间: <300mS;
电池容量: 3.7V 300mAh
充电电压: 5V 1A

七、低压

当电压等于或低于 3.5V 时红色指示灯会快闪 15 秒; 如一直处于低电状态, 每隔一分钟, 就报警一次。